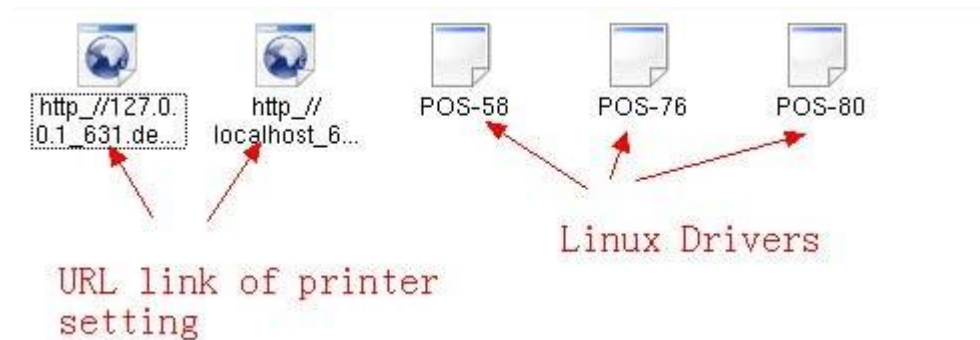




Instructivo para la instalación de controlador Linux de impresora

Metodo para instalación de controlador Linux

1. Todos los archivos estarán en una carpeta vacia luego de la descompresión del controlador como muestra la imagen



2. Presione F4 o use el menú de inicio para ir a la terminal de programación, luego ingrese `ls`, y presione enter, se mostrará como en la imagen 2, (se es diferente, usado el orden del CD para entrar en la carpeta luego ingrese `ls` y presione Enter).

```
root@bogon:/mnt/hgfs/english/POS linux - Shell - Konsole <2>
[root@bogon POS linux]# ls
http_%2f%2f127.0.0.1_631.desktop  POS-58  POS-80
http_%2f%2flocalhost_631.desktop  POS-76
[root@bogon POS linux]#
```

3. La instalación del controlador (./POS-80) se muestra a continuación:

```
jxaf@jxaf-virtual-machine: ~/Desktop/Linux Driver/POS-80
File Edit View Search Terminal Help
-----
Models included:
    POS-80

Searching for ServerRoot, ServerBin, and DataDir tags in /etc/cups/cupsd.conf
ServerBin tag not present in cupsd.conf - using default
DataDir tag not present in cupsd.conf - using default
ServerRoot =
ServerBin =
DataDir =

Restarting CUPS
[...] Stopping cups (via systemctl): cups.serviceWarning: Stopping cups.service, but it
can still be activated by:
    cups.path
    cups.socket
. ok
[ ok ] Starting cups (via systemctl): cups.service.

Go to http://localhost:631, or http://127.0.0.1:631 to manage your printer please!
jxaf@jxaf-virtual-machine:~/Desktop/Linux Driver/POS-80$
```

Instalación del controlador finalizada

4. Configuración de la impresora (1.Ingresando <http://localhost:631> or <http://127.0.0.1:631> en el navegador)
2. Abriendo el enlace URL entregado por la impresora (Metodo alternative) Opening the URL link which settled by the printer(remark: alternative)



Add New Printer

Name:

(May contain any printable characters except "/", "#", and space)

Location:

(Human-readable location such as "Lab 1")

Description:

(Human-readable description such as "HP LaserJet with Duplexer")

Continue

Next

Printer name
(necessary)

5. Seleccione la interface abajo mostrada

Device for POS-80

Device:

AppSocket/HP JetDirect
AppSocket/HP JetDirect
Backend Error Handler
Internet Printing Protocol (http)
Internet Printing Protocol (ipp)
LPD/LPR Host or Printer
LPD/LPR Host or Printer
LPT #1
Parallel Port #1
Parallel Port #1 (CANON)
Parallel Port #1 (EPSON)

Lan

Parallel

Device for POS-80

Device:

AppSocket/HP JetDirect
SCSI Printer
Serial Port #1
Serial Port #2
ThinPrint Gateway Printer for VMware
ThinPrint Printer for VMware
Unknown USB #1
USB Printer #1 (Bidi support)
USB Printer #2 (Bidi support)
USB Printer #3 (Bidi support)
USB Printer #4 (Bidi support)

Serial

USB port will be showed
only when the printer
connect with PC

The Copyright

logo are the trademark property of Easy Soft
ts Reserved.

6. Seleccione el Puerto LAN como en la imagen abajo

Device URI for POS-80

Device URI:

Examples:

- http://hostname:631/ipp/
http://hostname:631/ipp/port1
- ipp://hostname/ipp/
ipp://hostname/ipp/port1
- lpd://hostname/queue
- socket://hostname
socket://hostname:9100

See **"Network Printers"** for the correct URI to use with your printer.

Make/Manufacturer for POS-80

Make:

Continue

Or Provide a PPD File:

There is no this item when installation first time, just can be chosen after first time installation

Model/Driver for POS-80

Model: **POS-80 (en)**

Choose Printer Model

Or Provide a PPD File:

Add Printer Next

Authorization Dialog

You need to supply a username and a password to access this site.

Site: **CUPS at 127.0.0.1**

Username:

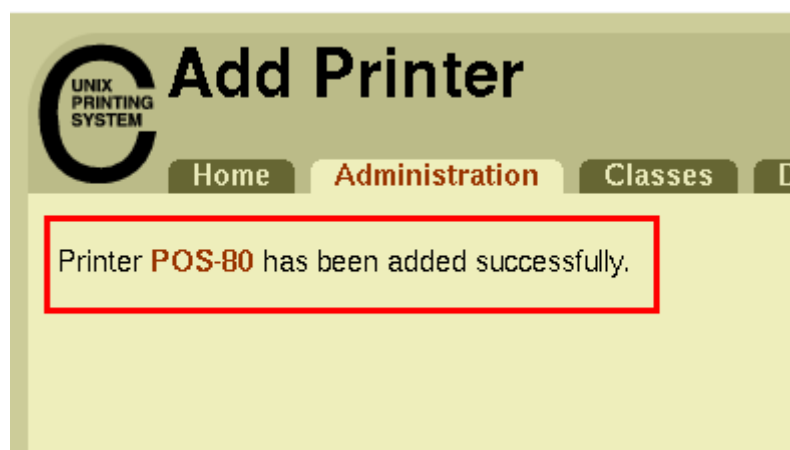
Password:

Keep password ☐

OK Cancel

Next

7. La impresora se añadió exitosamente si la imagen abajo aparece



La página abajo abrirá automáticamente, esta pagina son las configuraciones de la impresora, puede ser la configuración por defecto, también puede ser elegida de acuerdo a las necesidades:

POS-80: General

Media Size: 80mm x 297mm ▼

Set Printer Options

POS-80: Device Settings

Cash Drawer: Cash Drawer #1 Before Printing ▼

Blank space at page's end: Do not print ▼

Feed distance after print: feed 30mm ▼

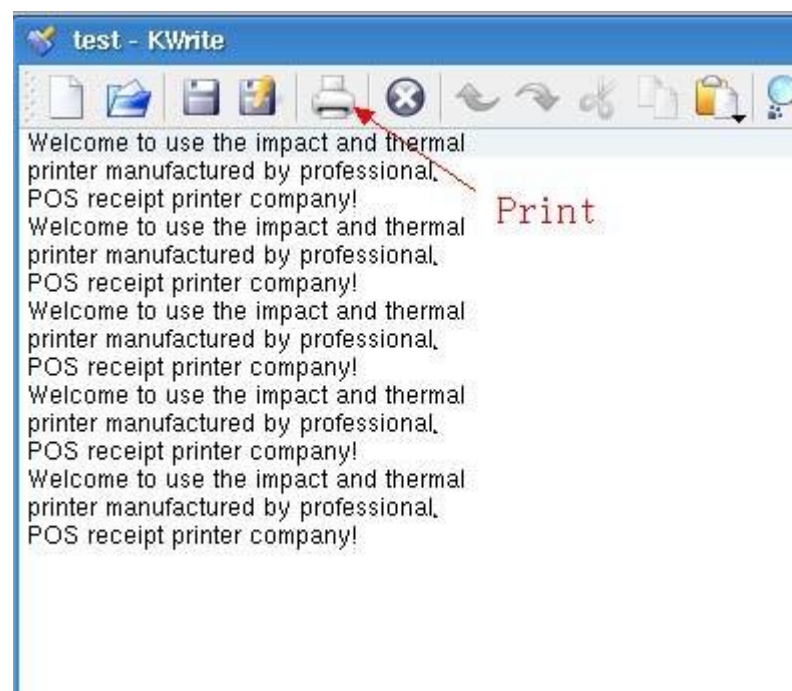
Cutting: Cut at the end of page ▼

Beeper: Beep before every page ▼

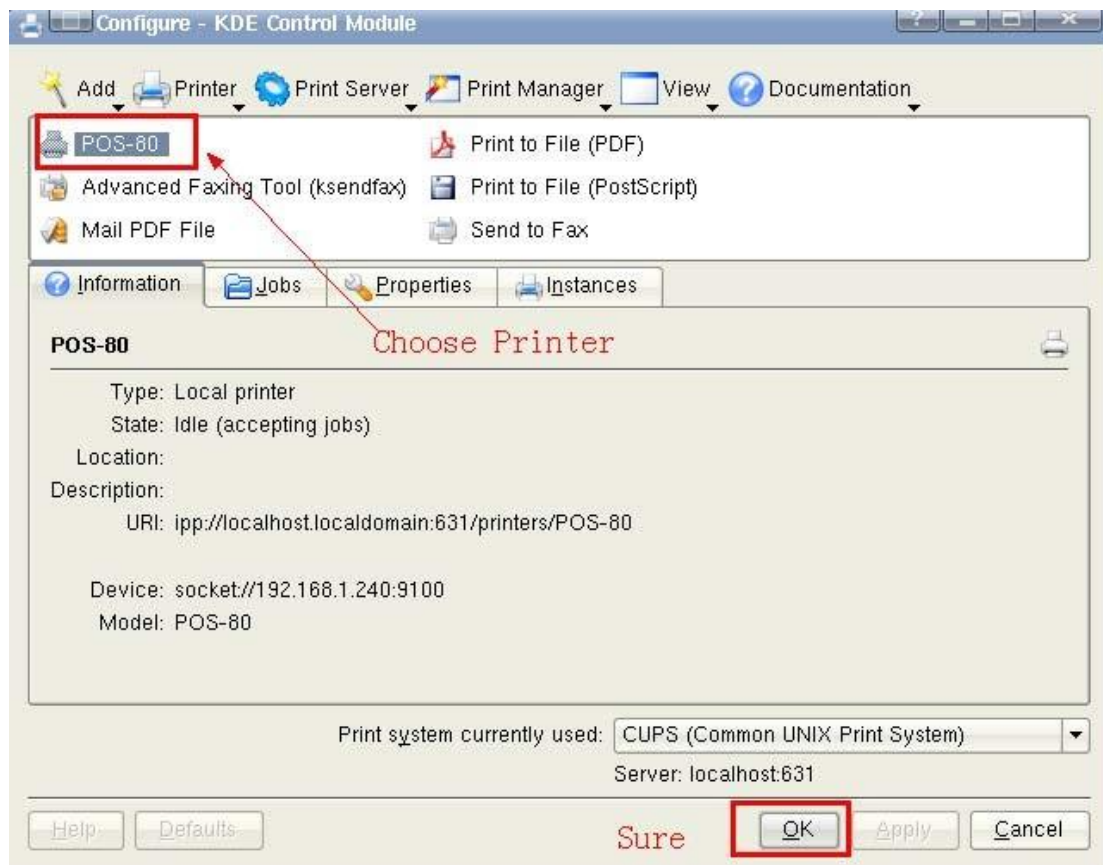
NV Logo: Do not print NV Logo ▼

Set Printer Options

8、 Prueba de impresión.



Elija la impresora que instalará justo ahora.



< Fin >